




Residential

Land

Available

Lot 2 Cluffs, St. Lucy

Details

 Lot Area
192,298 ft²

Lot 2 Cluffs , St. Lucy Cluffs is a flat relatively square lot of 192,298 sq. ft. in the northern part of beautiful Barbados. Cluffs is located near to a few well-known areas just to name a few such as Animal Flower Cave, Catch 22 and Crab Hill Police Station. Map pin for this lot is The starting bid price for each property and terms are available upon request. VISIT OUR WEBSITE FOR FULL PROPERTY DETAILS !! Office: 432-7191 Cell & WhatsApp: 851-5130/ 232-0464 Email: info@akirtonrealty.com Website: www.akirtonrealty.com #akirtonrealty #landinbarbados #barbadosproperty

✉ info@akirtonrealty.com

☎ 1-(246)-232-0464

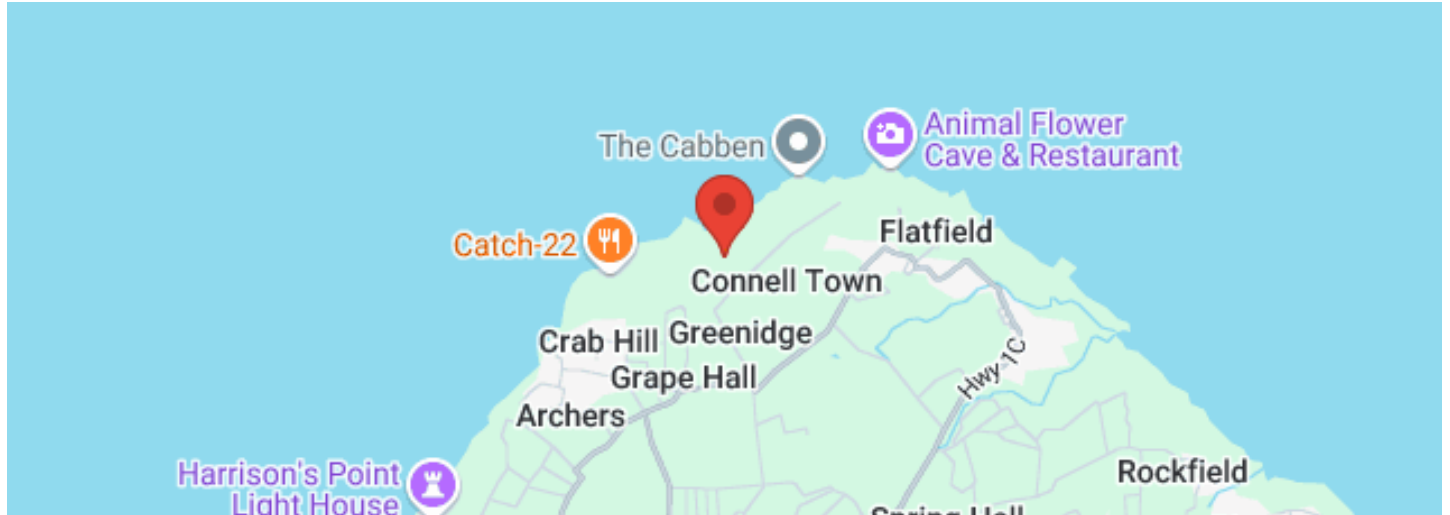
☎ 1-(246)-851-5132

☎ 1-(246)-432-7191

☎ 1-(246)-851-5130

Location

📍 St. Lucy



Nearby Places

Supermarkets	📍	🚗
Fair Deals Supermarket Crab Hill	3.1 km	6 mins
Cost U Less	21.7 km	28 mins
PriceSmart	23.7 km	31 mins
Jordans Supermarket Speightstown	11.9 km	19 mins
Trimart Supermarket, Mile & A Quarter	8.7 km	12 mins
Gas Stations	📍	🚗
Benthams RUBIS	6.1 km	9 mins
Esso Gas Station	8.2 km	12 mins
Sol Gas Station	10.6 km	16 mins
Sol Gas Station Redmans Village	22.5 km	29 mins
Sol Gas Station Warrens	23.1 km	30 mins
Schools	📍	🚗
Selah Primary School	2.6 km	5 mins
St. Lucy's Primary School	4.3 km	6 mins



Schools		
Ignatius Byer Primary School	6.5 km	13 mins
Daryll Jordan Secondary School	4.5 km	7 mins
All Saints' Primary School	8.4 km	11 mins
Churches		
Bethel Pentecostal Church In Greenidges	1.0 km	2 mins
St. Peter Parish Church	10.7 km	17 mins
Saint Clement's Church, Barbados	6.9 km	14 mins
Avis Town Church of God	2.9 km	5 mins
Mile and A Quarter SDA Church	7.5 km	10 mins
Restaurants		
Animal Flower Cave & Restaurant	3.8 km	8 mins
Grandene's Bar & Bistro	11.9 km	18 mins
Baia Barbados	10.7 km	17 mins
The Cliff	22.6 km	30 mins
Sand Street Bistro	10.7 km	17 mins
Beaches		
Morgan Lewis Beach	15.7 km	22 mins
Heywoods Beach	9.9 km	16 mins
Heywoods Beach	9.7 km	16 mins
Mullins Beach	12.4 km	19 mins
Walkers Beach	15.3 km	19 mins
Attractions		
Animal Flower Cave & Restaurant	3.8 km	8 mins
Sunset Point	3.5 km	7 mins
North Point	2.0 km	5 mins
Harrison's Cave Eco-Adventure Park	23.9 km	33 mins
Farley Hill National Park	10.4 km	14 mins

Auction

Lot 2 Cluffs, St. Lucy



A KIRTON REALTY SERVICES
"Let's reach your goal together"

Photos

Land Area: 192,298 sq.ft. 

**For Sale
BY PUBLIC
AUCTION!**

**15 SEP 2024
10:30 AM**

Contact Us!
432-7191/232-0464/851-5130
www.kirtonrealty.com



✉ info@akirtonrealty.com

☎ 1-(246)-432-7191

☎ 1-(246)-232-0464

☎ 1-(246)-851-5130

☎ 1-(246)-851-5132

🌐 akirtonrealty.com  [akirtonrealty](https://www.facebook.com/akirtonrealty)  [A Kirton Realty](https://www.instagram.com/AKirtonRealty)

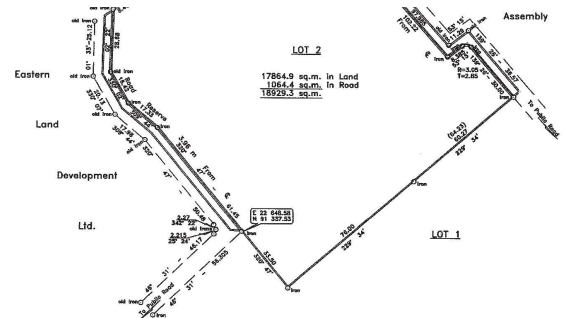


Auction

Lot 2 Cluffs, St. Lucy



A KIRTON REALTY SERVICES
"Let's reach your goal together"



I certify that this is a True Copy of the original.

ROGER H. FARRINGTON
LAND SURVEYOR
200-55-1

Barbados

PLAN OF LAND

at
containing

LOT 2, CLUFFS, ST. LUCY	
Land	17864.9 sq. m.
Road	1064.4 sq. m.
TOTAL	18929.3 sq. m.

SCALE 1 : 1000

Reference are to nearest
Boundary are referred to G.S.D. Survey
derived from original plan by S.A.G. Scott
dated 1880-12-25, D.L. No. 571/85
My Plan recorded D.L. No. 805/88
T.C.P.O. No. 1990/10/96C
Pn. No. 81-07-33

Floor Plans

✉ info@akirtonrealty.com

☎ 1-(246)-432-7191

☎ 1-(246)-232-0464

☎ 1-(246)-851-5130

☎ 1-(246)-851-5132